

ELEV 364

NZMS

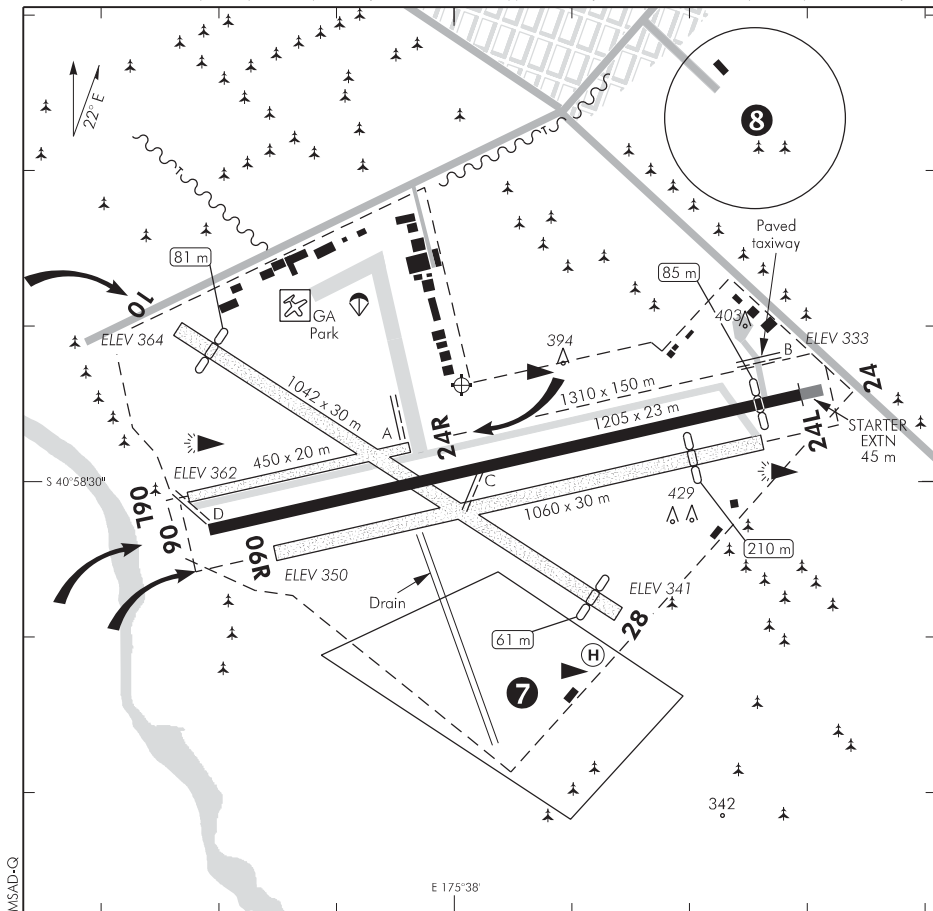
NON-CERTIFICATED

**MASTERTON
AERODROME (1)**

CHRISTCHURCH INFORMATION: 124.2

AWIB: 132.8

UNATTENDED: 119.1



1. Circuit:

Sealed RWY06 — Right hand	Grass RWY 10 and Southern grass RWY 06R — Right hand
24 — Left hand	Grass RWY 28 and Southern grass RWY 24L — Left hand
	Northern grass vector
	06L — Left hand
	24R — Right hand
2. Simultaneous operations on parallel paved and grass runways prohibited.
3. Grass areas very soft when wet in winter.
4. Northern parallel grass vector 06L/24R restricted to locally based operators only.
5. **CAUTION:** (a) All aircraft over 5700 kg MCTOW are advised to remain on main runway or mown taxiways.
 - (b) **NORDO movements can take place on any day.**
 - (c) Parachute activity takes place — surface to 12,000 ft AMSL. Pilots should avoid overhead join procedure when parachute operations are in progress. Listen out on 119.1.
 - (d) Gliders operate and operations can be quite extensive.
 - (e) Open drain hazard to the south of intersection of Gr RWY 06R/28.

(continued)

S 40 58 24 E 175 38 01*

Effective: 8 NOV 18

© Civil Aviation Authority

**MASTERTON
AERODROME (1)**

**MASTERTON
AERODROME (2)**

6. AWIB (local weather information) obtained by transmitting 4 quick pulses on 132.8 MHz.
7. Model aircraft flying takes place in this area on the southeast sector of the aerodrome. A red flashing beacon atop their clubrooms indicates when in operation.
8. Model aircraft flying takes place in this area up to 400 ft AGL.
9. If radio equipped listen to AWIB to determine likely RWY in use.
10. A standard overhead join is recommended, except when parachute operations are in progress.
11. NORDO Vintage aircraft often use large grass areas on the aerodrome for taking off and landing into the prevailing wind, not conforming to published RWY direction.
12. The northern grass RWY 06L/24R is often used by NORDO aircraft in a low level circuit.
13. Agricultural aircraft operate from the aerodrome departing and approaching at low level.
14. If not intending to land at Masterton, keep well clear of the circuit pattern and the parachute drop area.
15. Helicopters are to approach and depart no higher than 600 ft AGL within the circuit area, and are not to occupy the centreline of any runway.
16. The parallel taxiway is not to be used during scheduled operations.
17. To taxi to RWY 06, backtrack on RWY 06L.