

WARM AIR 19 February 2022

Aviation Sports Club Gliding Newsletter

THIS WEEKEND:

www.ascgliding.org

Bank Acct 38-9014-0625483-000

Saturday

Instructing: Lionel Page
Towing: Rex Carswell
Duty Pilot: Claire Dickson

Sunday

Instructing: Ivor Woodfield
Towing: Fletcher McKenzie
Duty Pilot: Kazik Jasica

MEMBERS NEWS

- *In Warm Air this Week;*
- *Club News*
- *Weekend Reports*
- *Roster*

Thank you for the contributions from members.

Club News

PHASE 2 RED Traffic Light Setting

The committee discussed the change to Phase 2 and the increasing and sharp rise of known numbers of COVID 19 cases in Auckland and the potential impact and safety of members.

The committee has decided it will allow flying to continue and will monitor this on a weekly basis to determine whether this is viable with the escalating outbreak and the availability of instructors and tow pilots. Trial flights will be put on hold, and we request that non-members / external visitors do not attend the club in the meantime. *This does not cover essential maintenance persons.*

The choice to attend the club is yours, however, do not feel compelled to attend if you are rostered on. Please liaise with the tug master and CFI so they can organise cover.

No reason needs to be given!

The PHASE 2 Omicron Response changes the actions to take and the times for isolation for COVID Positive and Close Contacts and this chart provides a good summary for reference.

It has been observed that most members have been following good public health measures. This is not the time to slacken up those measures!

Key reminders

- You must be Fully Vaccinated to be on Base and at the Club.
- Keep scanning the clubs QR COVID Tracer
- You need to have My Vaccine Pass App on your phone or the official paper certificate as verification.
- Don't come the club if you have COVID symptoms, are unwell,

Explaining COVID-19 contacts (Phase 2)

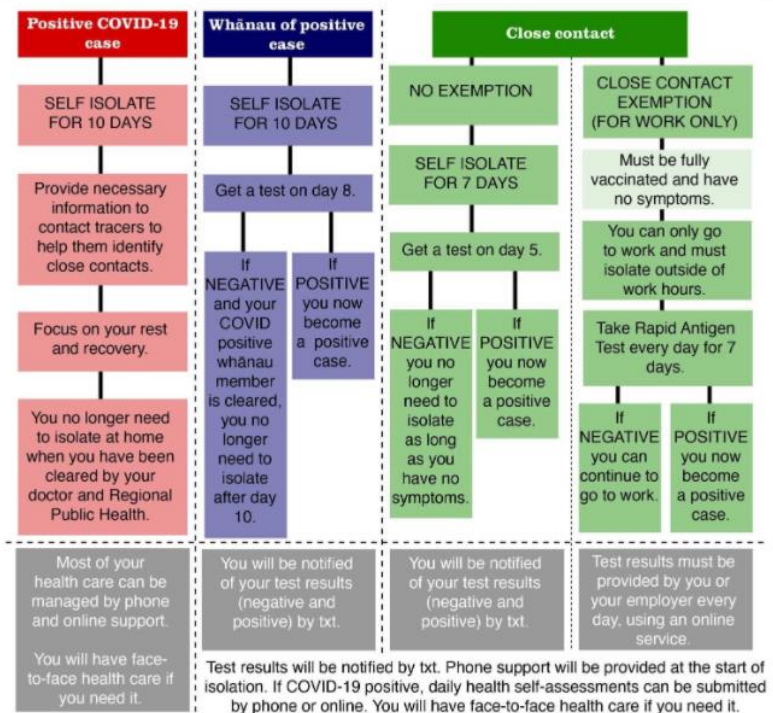
What is the difference between a positive case, whānau of a positive case and a close contact?

Positive case - someone who has tested positive for COVID-19.

Whānau of positive case - the people who live in the same house as someone who has tested positive.

Close contact - someone who has had contact with a person with COVID-19 when they were infectious.

Secondary and casual contacts are no longer impacted by COVID-19 restrictions but you should monitor for symptoms and get tested if you are feeling unwell.



have a household member isolating from COVID or been a [Close or Secondary contact](#) or still in isolation or waiting for required COVID Test results. Please continue to check Location of Interest [COVID-19: Contact tracing locations of interest | Ministry of Health NZ](#)

- Maintain Physical Distancing and Mask Wearing and Hand Washing.

Masks are essential to prevent airborne infected aerosol from an infected person when you sneeze, cough talk etc. Bandanas, scarfs are not acceptable and fabric masks are poor. So, ensure you turn up with an appropriate surgical mask or P2/N95 and wear it properly. You are protecting others when you do so. [Covid-19: GP shows how to fit your N95 and surgical mask at home | Stuff.co.nz](#)

And if you do become a **Positive COVID case** and you have attended the club during this infectious period, please let us know. Do not be embarrassed, this is not your fault, it is a sneaky and easily transmittable disease, and many are being unwittingly infected. The best thing to do is inform the Public Health Contact Tracers or access the Contact Tracing form link and contact us so we can inform relevant members that they need to monitor symptoms or get a test. We will keep your details confidential. [If you test positive for COVID-19 | Unite against COVID-19 \(covid19.govt.nz\)](#)

It has happened again

Another car has come through the fence at our end of Waimarie Road, having failed to take the bend. Car and fence were significantly damaged, but fortunately on this occasion the car came to a stop without hitting any of our trailers. We understand the Libelle trailer was closest to being hit and in fact some members thought it had been damaged, until it was realised this was its normal state.



There may be a need to move trailers further away from the fence line based on this being the second crash in this area in less than 2 years.

Glider survey - transponders & tow hooks

If you are a private owner, do not forget to respond to this Gliding NZ survey that was emailed to all known owners during the week . If you missed the email, contact us and we will forward it on to you.

Dear all,

The Gliding NZ Executive is conducting this simple short survey of equipment fitted to NZ registered gliders. We would be grateful if you could answer the following questions for each glider you own, and/or any that you may be looking after on behalf of a deceased estate:

Glider Registration					
Transponder Manufacturer					
Transponder Model					
ADS-B Out fitted? (Y/N)					
Intend to fit ADS-B Out (Y/N)					
ADS-B In fitted? (Y/N)					
Intend to fit ADS-B In? (Y/N)					
Is the glider fitted with a nose hook?					

Please fill in the table for each glider and return this to me, preferably before the end of March.

This will help us in any future negotiations with CAA on these matters. (A similar survey is being sent to clubs.)

Finally, in case you're wondering about where we are at with the glider trailer rear overhang problem – at long last, we believe we are close to getting an exemption!

Kind regards
Max Stevens
Executive Officer



Weekend Reports

Saturday – Peter Thorpe reports

The weather forecast for Saturday was pretty bad with high winds expected from an approaching cyclone, so we postponed the BFR I was supposed to do in RDW on Saturday morning due to low cloud. However, it was not looking too bad and I could see some blue sky so I went to the field to find tow pilot Paul Eichler, Jonathan Pote and ever enthusiast Alex Michael waiting at the gate. We duly opened the hangar and waited to see if anyone else would appear. There was broken cloud at about 800ft and more at 1500ft and a brisk northerly wind so there was not much we could have done other than cross wind circuits. Izzy Burr joined our discussion and we filled in time by inspecting the fence where, yet another car had crashed through, fortunately without hitting nay trailers this time. We also checked the trailers were secure against high winds and then decided at 1130 there was no point in setting up on 08 for just one or two circuits so we packed up and went home.

Sunday – Steve Wallace Reports

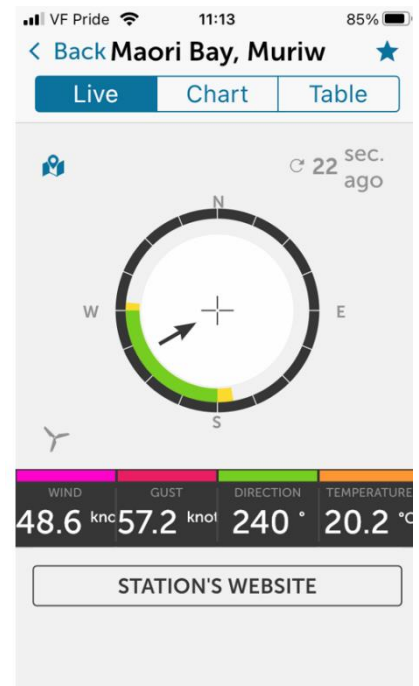
Due to ex-tropical cyclone Dovi passing over the central north island on Sunday it seemed wise not fly, so we didn't. It was however interesting to watch the live weather feeds from the Maori Bay weather station at Muriwai. Things seemed to peak around 11.00am with average wind speeds (ground level) of 45.9 Kts and peak gusts of just over 60 Kts! It would have made for some pretty interesting flying conditions that's for sure.

WIND (KNOTS)	GUST (KNOTS)	DIRECTION	TEMPERATURE (°C)	TIME
45.9	60.5	→ WSW	20.1	11:00
41.0	54.5	→ WSW	20	10:45
43.7	56.2	→ WSW	19.5	10:30
41.6	50.2	→ WSW	19.2	10:15
40.5	54.5	→ W	19.5	10:00
35.1	50.2	→ WSW	19.5	09:45
42.1	50.8	→ WSW	18.7	09:30
42.7	54.0	→ WSW	18.2	09:15
42.1	55.6	→ W	18.8	09:00
40.5	52.4	→ W	19.2	08:45
41.6	52.4	→ WNW	19.5	08:30

Quiz Question

What speed would you fly a circuit at in these conditions?

- A. 60 Kts
- B. 80 Kts
- C. 90 Kts



D. Don't be daft, I wouldn't fly in these conditions.

So, there you have it from the COAST GURU

And in less than 24 hours later – Jonathan Pote Reports

On Monday I went out to Muriwai on the most perfect day just twenty-four hours after the storm.



The paragliding school put up three canopies (loaning **our** lift) with dual students. I was going to tag on the end but the wind increased and they called it a day.



I will give it a go, tho', seems pretty good fun.



Duty Roster For Jan, Feb, Mar

Month	Date	Duty Pilot	Instructor	Tow Pilot
Jan	15	R BAGCHI	I WOODFIELD	D BELCHER
	16	T O'ROURKE	S WALLACE	G CABRE
	22	M MORAN	A FLETCHER	P THORPE
	23	I O'KEEFE	R BURNS	R CARSWELL
Anniversary Weekend	29	K PILLAI	L PAGE	R HEYNIKE
	30	K BHASHYAM	I WOODFIELD	F MCKENZIE
	31	T PRENTICE	A FLETCHER	D BELCHER
Waitangi Weekend	5	C BEST	I WOODFIELD	G CABRE
	6	E LEAL SCHWENKE	L PAGE	R CARSWELL
	7	R MCMILLAN	S WALLACE	P THORPE
Feb	12	A MICHAEL	P THORPE	P EICHLER
	13	R WHITBY	S WALLACE	R HEYNIKE
	19	C DICKSON	L PAGE	R CARSWELL
	20	K JASICA	I WOODFIELD	F MCKENZIE
	26	J DICKSON	R BURNS	D BELCHER
	27	S HAY	A FLETCHER	P THORPE
Mar	5	R BAGCHI	P THORPE	G CABRE
	6	T O'ROURKE	S WALLACE	P EICHLER
	12	M MORAN	I WOODFIELD	R HEYNIKE
	13	I O'KEEFE	R BURNS	R CARSWELL
	19	K PILLAI	L PAGE	F MCKENZIE
	20	K BHASHYAM	A FLETCHER	G CABRE
	26	T PRENTICE	P THORPE	D BELCHER
	27	C BEST	R BURNS	P EICHLER

